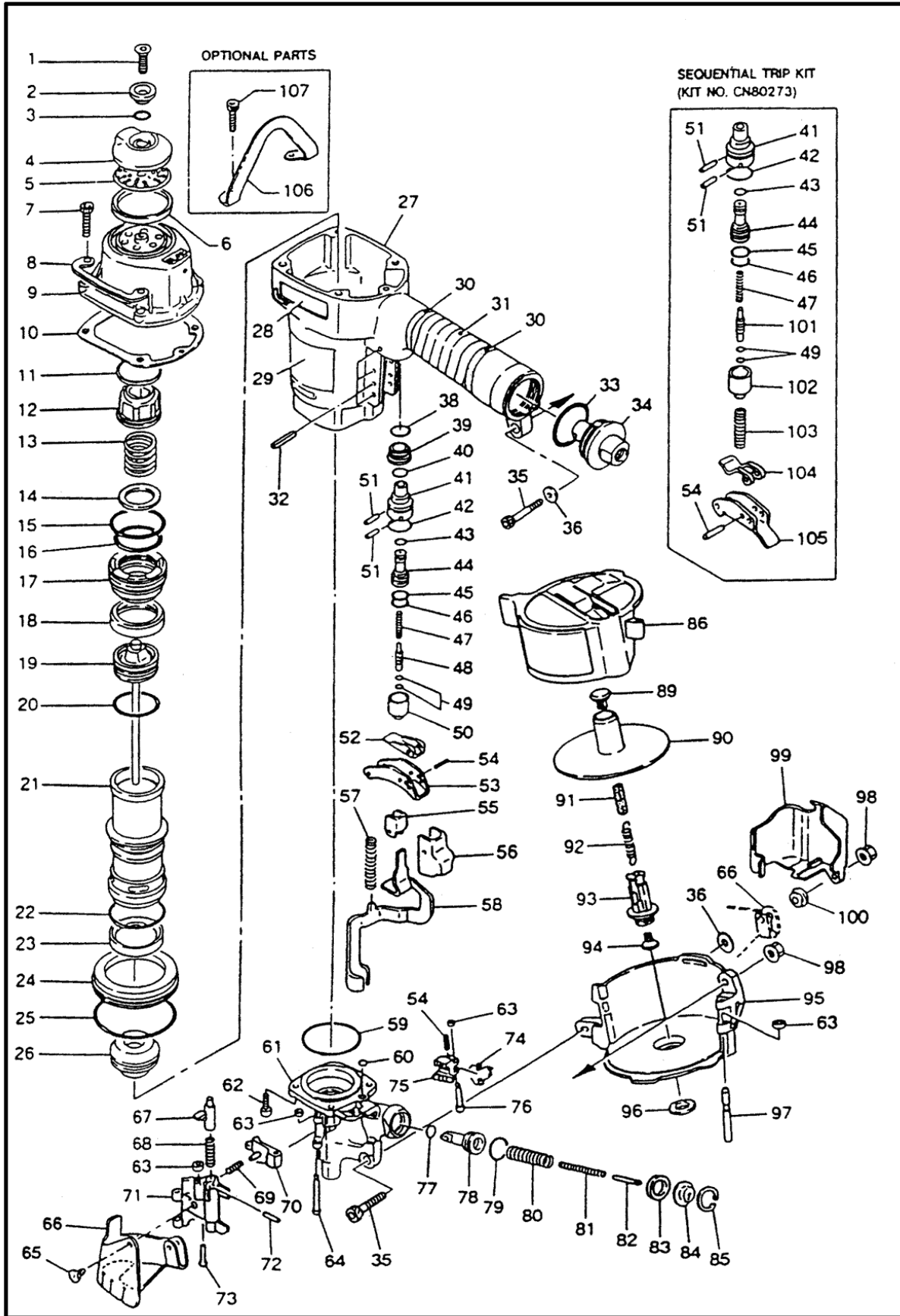


CN55



Ref	Part Number	Description
1	AA82427	SCREW M8X20 (QTY 10)
2	CN32631	EXHAUST COVER HOLDER
3	HH11132	O-RING 1AP10A (QTY 10)
4	CN32243	EXHAUST COVER
5	CN31934	EXHAUST FILTER
6	CN32242	EXHAUST COVER SEAL
7	BB40428	BOLT 6X25 (QTY 10)
8	CN35767	PROTECTOR (CN34410)
9	CN34402	CYLINDER CAP UNIT
10	CN34416	CYLINDER CAP SEAL
11	CN31937	SPACER, EXHAUST
12	CN33008	PISTON STOP
13	KK23578	SPRING 3578
14	CN33610	HEAD VALVE WASHER
15	HH11156	O-RING ARP568-137
16	HH11909	O-RING 1A2.6X41.5
17	CN34405	HEAD VALVE PISTON
18	CN33745	CYLINDER SEAL
19	CN31866	MAIN PISTON UNIT
20	HH11101	O-RING 1AP38 (QTY 10)
21	CN31864	CYLINDER
22	HH11157	O RING ARP568-136
23	CN31865	CHECK VALVE
24	CN31429	CYLINDER RING
25	HH12106	O RING 1AG75
26	CN31890	BUMPER
27	CN34401	FRAME
28	CN34404	"CN55" LABEL
29	CN34726	WARNING LABEL
30	CN34703	
32	FF21254	ROLL PIN 3X28 (QTY 10)
33	HH12118	O RING 1AG35 (QTY 10)
34	CN34403	END CAP
35	BB40457	BOLT 6X45 (QTY 10)
36	EE39138	PLAIN WASHER 138 (QTY 10)
38	HH11159	O-RING ARP568-016 (QTY 10)
39	CN31885	SPACER (QTY 10)
40	HH11151	O-RING ARP568-013 (QTY 10)
41	CN32247	TRIGGER VALVE HOUSING
42	HH11138	O RING 1AP20 (QTY 10)
43	HH11119	O RING 1AP6 (QTY 10)
44	CN31589	PILOT VALVE (CN32246)
45	HH11209	O RING 1BP7 (QTY 10)
46	HH11113	O RING 1AP9 (QTY 10)
47	KK23129	COMPRESSION SPRING 3129 (QTY 10)
48	CN31347	TRIGGER VALVE STEM (QTY 5)
49	HH11901	O-RING 1B1.4X2.5 (QTY 10)
50	CN31346	TRIGGER VALVE CAP
51	FF30161	STRAIGHT PIN 161 (QTY 10)
52	TA10506	CONTACT LEVER (QTY 10)
53	TA10505	TRIGGER
54	FF21220	ROLL PIN 3X16 (QTY 10)
55	CN31870	CONTACT ARM GUIDE
56	CN34420	CONTACT ARM COVER B (QTY 10)
57	KK23256	SPRING 3256 (QTY 10)
58	CN35821	CONTACT ARM UNIT (CN31888)
59	HH19198	O-RING 1A1.9X47 (QTY 5)
60	HH19125	O-RING 1A1.6X4.2 (QTY 10)
61	CN34419	NOSE
62	BB40413	BOLT 5X22 (QTY 10)
63	EE39602	RUBBER WASHER 7 (EE39623)
64	FF41501	STEP PIN 1501

65	CN31083	DUST COVER HOOK (QTY 5)
66	CN31882	DUST COVER
67	CN30587	DOOR LATCH
68	KK23123	SPRING 3123 (QTY 10)
69	KK23109	SPRING 3109
70	CN31881	CHECK PAWL
71	CN31880	DOOR
72	FF21234	ROLL PIN 3X12 (QTY 10)
73	FF41502	STEP PIN 1502
74	KK33058	SPRING 3058
75	CN31875	FEED PAWL
76	FF41263	STEP PIN 1263
77	HH19197	O-RING 1A2.4X9.8 (QTY 10)
78	CN31876	FEED PISTON
79	HH11143	O-RING 1AP21 (QTY 10)
80	KK23257	SPRING 3257 (QTY 10)
81	KK23258	SPRING 3258 (QTY 5)
82	CN31878	SPRING GUIDE
83	CN31877	FEED PISTON STOP
84	CN31879	SPRING COLLAR
85	JJ22407	RETAINING RING C26 (QTY 10)
86	CN35822	MAGAZINE COVER (CN34408)
90	CN35823	NAIL SUPPORT UNIT (CN31962)
91	CN30601	SPACER (QTY 5)
92	KK13144	TENSION SPRING 3144 (QTY 10)
93	CN34407	MAGAZINE POST
94	CN30602	"RECEIVER, SPRING" (QTY 5)
95	CN34406	MAGAZINE
96	EE39603	POST RETAINER (QTY 10)
97	FF31251	STRAIGHT PIN 1251
98	CC00402	ELASTIC STOP NUT M6X1 (QTY 10)
99	CN31872	CONTACT ARM COVER-A
100	CN30707	COLLAR (QTY 5)
101	CN31715	TRIGGER VALVE STEM
102	CN31716	TRIGGER VALVE CAP
103	KK23228	SPRING 3228 (QTY 10)
104	CN34300	CONTACT LEVER
105	CN30276	TRIGGER
106	CN34728	HANGER
107	BB40422	BOLT 6X30 (QTY 10)
108	CN33627	PILOT VALVE (QTY 5)
109	CN80610	O-RING KIT FOR CN55
110	CN80548	TRIGGER VALVE ASSEM.
111	CN80273	SEQUENTIAL TRIGGER KIT