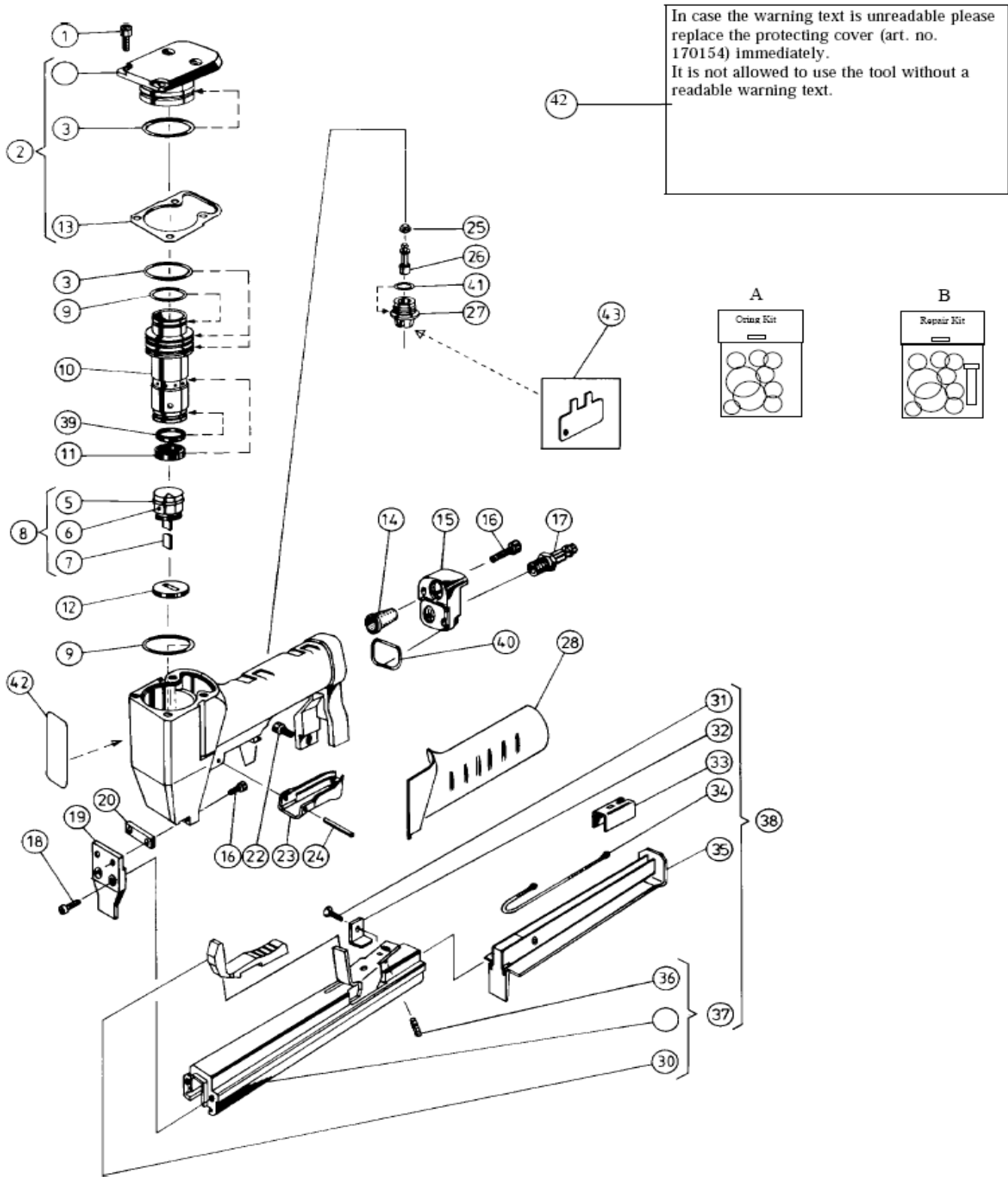
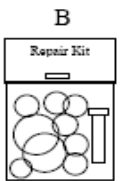
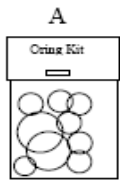


JK21-670, JK21-680



In case the warning text is unreadable please replace the protecting cover (art. no. 170154) immediately. It is not allowed to use the tool without a readable warning text.



Spare parts list JK21 670, 680

Drawing 118487

Pos Ref Ref No.	Detalj Part Référence No.	Benämning	Discription	Bezeichnung	Designation	Antal Qty	Anm. Notes
A	143013	O-ringsats	O-ring kit	O-ringsatz	Jeu d'Orings		
B	143014	Reparationssats	Repair kit	Reparatursatz	Jeu de rechange		JK21-670
B	143015	Reparationssats	Repair kit	Reparatursatz	Jeu de rechange		JK21-680
1	946634	Skruv	Screw	Schraube	Vis	4	
2	132313	Lock kpl	Cap, assy.	Deckel kpl	Chapeau supérieur	1	
3	972047	O-ring	O-ring	O-ring	Joint torique	3	
5	972124	Kolvringssats	Piston rings	Kolbenring-Satz	Jeu de joints pour piston	1	
6	145099	Drivarhållarpinne	Driver pin	Stößelstift	Axe d'enfonceur	1	
7	164070	Drivare	Driver blade	Stößelblech	Enfonceur	1	670
	164076	_"	_"	_"	_"	1	680
8	134205	Kolv med drivare kpl	Piston with driver,assy	Kolben kpl	Piston-enfonceur cpl	1	670
	134211	_"	_"	_"	_"	1	680
9	972113	O-ring	O-ring	O-ring	Joint torique	2	
10	190160	Cylinderfoder	Cylinder liner	Zylinderlaufbuchse	Cylindre	1	
11	148015	Tätning backventil	Sealing ring/non-return valve	Dichtungsring/Rückschlagventil	Garniture inf. de valve	1	
12	149085	Kolvdämpare	Piston stop	Kolbendämfer	Butée de piston	1	670
	149090	_"	_"	_"	_"	1	680
13	148041	Tätning	Seal	Dichtung	Garniture inférieur	1	
14	171016	Ljuddämpare	Silencer	Schalldämpfer	Silencieux	1	
15	179076	Bakre lock	Rear cap	Verschlussstück	Chapeu arrière	1	
16	946708	Skruv	Screw	Zylinderschraube	Vis	4	
17	987023	Nippel	Nipple	Stecknippel	Raccord	1	
18	946634	Skruv	Screw	Schraube	Vis	2	
19	162573	Främre driv.stym.	Front nozzle plate	Vorderplatte	Plaque avant	1	670
	162596	_"	_"	_"	_"	1	680
20	162572	Distans	Spacer	Zwischenplatte	Entretoise	1	
22	946511	Skruv	Screw	Schraube	Vis	1	
23	165098	Avtryckare	Trigger	Ventilhebel	Détente	1	
24	945071	Pinne	Pin	Stift	Pivot	1	
25	972126	Tätningshatt	Seal cap	Dichtring	Garniture	1	
26	191148	Spindel	Valve stem	Ventilstössel	Tige de valve	1	
27	191145	Ventilsäte	Valve seat	Ventilsitz	Siège de clapet	1	
28	149082	Handtagshalva v.	Handle section, left	Handschutz links	Élément de poignée gauche	1	
	149083	_" h.	_" right	_" rechts	_" droit	1	
30	165089	Trycke mag.spärr	Trigger, mag.catch	Rasthebel	Blocage de détente	1	
31	946696	Skruv	Screw	Zylinderschraube	Vis	1	
32	160126	Magasinstopp	Magazine catch	Magazinanschlag	Blocage de magasin	1	
33	161236	Frammatare	Pusher	Kloben	Poussoir	1	670
	161238	_"	_"	_"	_"	1	680
34	173053	Frammatarfjäder	Feeder spring	Zustellfeder	Ressort de poussoir	1	
35	132190	Inre klammerbana	Inner rail	Magazinschieber	Rail intérieur	1	670
	132203	"	"	"	"	1	680
36	173128	Fjäder	Spring	Druckfeder	Ressort	1	
37	132666	Yttre kl.bana kpl	Exterior rail, assy.	Klammerträger kpl	Rail	1	670
	132692	"	"	"	"	1	680
38	132664	Magasin kpl	Magazine, assy.	Magazin kpl	Magasin cpl	1	670
	132693	"	"	"	"	1	680
39	972125	Stödtring	Support ring	Distanzring	Bague support	1	
40	972127	O-ring	O-ring	O-ring	Joint torique	1	
41	972133	"	"	"	"	1	
42	110174	Varningsskylt	Warning label	Sicherheitsschild	Plaque de sign.	1	Svensk
	110175	"	"	"	"	1	Engelsk
43	750006	Special nyckel	Special key	Spez. Schlüssel	Clé spéciale	1	Tillb. access.