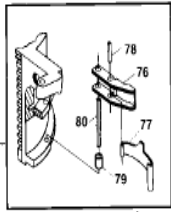
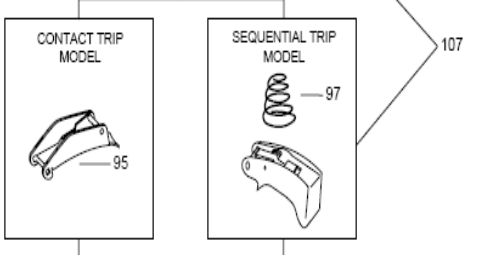
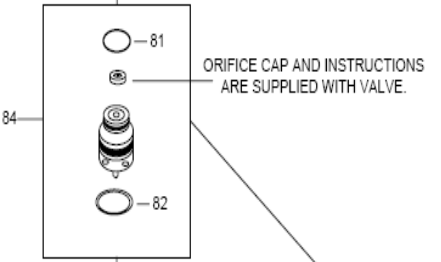
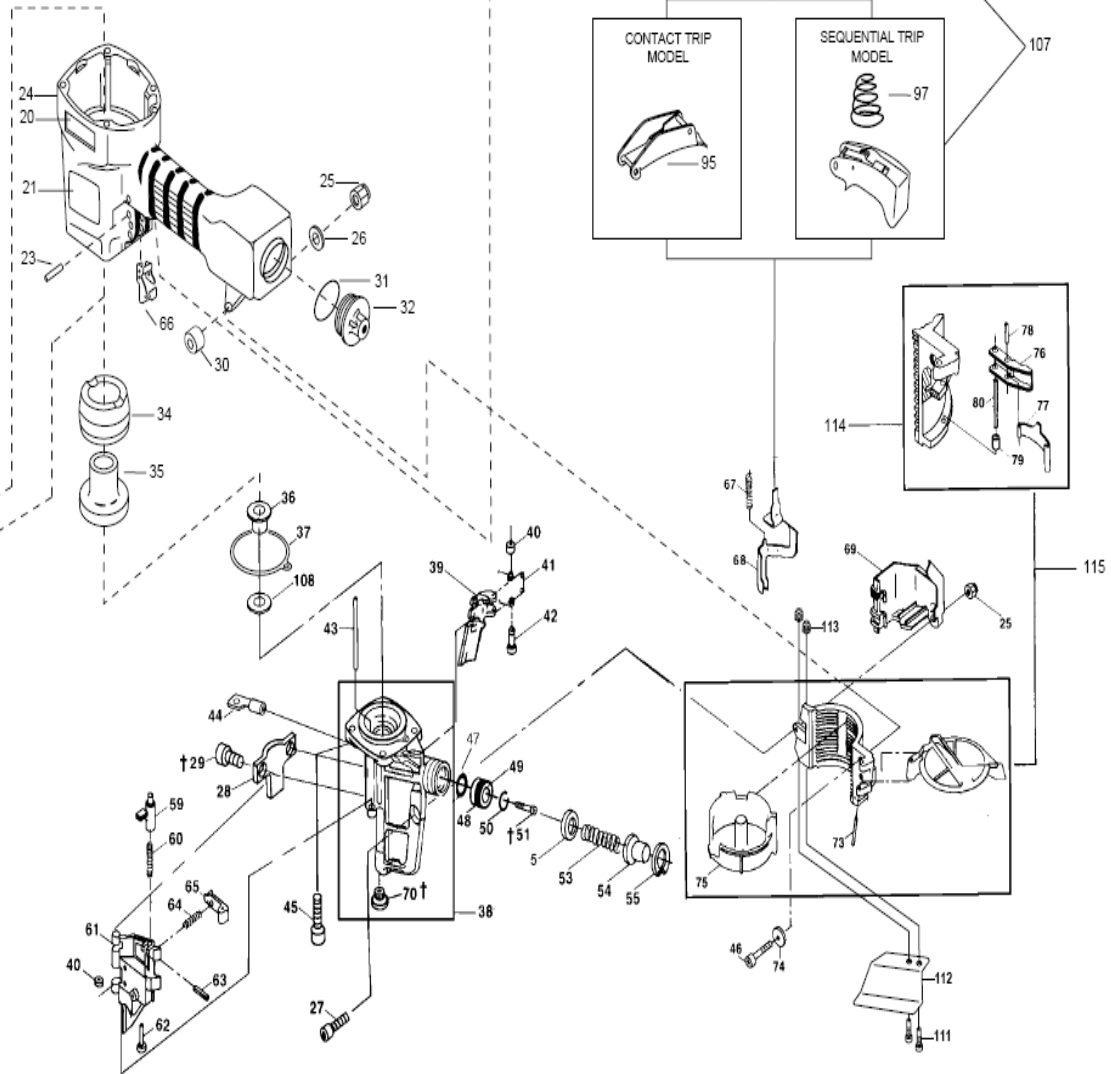


N100C
COIL-FED PNEUMATIC NAILER
CLAVADORAS NEUMÁTICAS ALIMENTADAS POR ROLLO
CLOUEURS PNEUMATIQUES À ENROULEMENT



IP1067-1REVJ 10/03
 TO BE REVISED WITH PARTS IP1067-2

† Screw to feed piston rod with Loctite #271, available as part 851325 Loctite 271 Packet.

†† Assemble these threaded components with Loctite #242, available as part 851385.

Item#	Illus.#	Description
105592	0001	CAP (SERVICE PART)
MSC6100-25	0002	SCREW,SHCS,M6X1.00X25
MSS6100-6P	0004	SCREW,CUPSSS,M6X1.00X6
N100131	0005	SEAL, CYLINDER CAP
N86132	0006	PISTON STOP
854017	0007	SPRING,COMPRESSION
MRG051531	0009	O-RING,2.028X.122
105578	0010	HEAD VALVE (SERVICE PART)
851538	0011	O-RING,2.675X.116
N86125	0012	HEAD VALVE SEAL
N100116	0013	MAIN PISTON
851539	0014	O-RING,2.039X.253
N90111	0016	CYLINDER SLEEVE
RG273710	0017	O-RING,2.737X.103
N100128	0018	SEAL, CHECK
N100317	0019	LOWER SLEEVE
113220	0020	LABEL,BOSTITCH
159912	0021	LABEL,WARNING,COIL NAILER
102549	0023	PIN,SPECIAL SPIROL M3XM25
N90110	0024	FRAME
MHE6100-100	0025	NUT,ESN M6X1
MPW6.2	0026	WASHER.SPECIAL
MSC6100-35	0027	SCREW,SHCS,M6X1.00X35
N100113	0028	CONTACT ARM RETAINER
MSC6100-12	0029	SCREW,SHCS,M6X1.00X12
N70143	0030	BUSHING,RUBBER
850235	0031	O-RING,1.487X.103
T40207	0032	CAP,END
N100129	0034	BUMPER, OUTER
N100130	0035	BUMPER, INNER
N100103	0036	DRIVER,GUIDE
106294	0037	SEAL,NOSE
104170	0038	ASSEMBLY,NOSE & WEAR BUSH
N100112	0039	FEED PAWL
854004	0040	WASHER
N80120	0041	SPRING,TORSION
N50087	0042	PIN,SPECIAL(STEP)
N90106	0043	PIN,DOOR HINGE
N80121	0044	ROD,FEED PISTON
MSC8125-30	0045	SCREW,SHCS M8X30
MSC6100-40	0046	SCREW,SOC. HD. CAP M6X1.0
MRG009824	0047	O-RING,.386X.094
851384	0048	O-RING,.987X.103
N80128	0049	PISTON, FEED
LW14.2	0050	WASHER,1/4 HI COL LOCK
MSC6100-16	0051	SCREW,SHCS,M6X1.00X16
N80123	0052	BUMPER,FEED PISTON
N80122	0053	SPRING,COMPRESSION
N80124	0054	COVER, FEED PISTON
851383	0055	RING, RETAINING METRIC
MRG004216	0056	O-RING,.165X.063
N70150	0059	LATCH DOOR
854013	0060	SPRING,COMPRESSION
N100101	0061	DOOR
N90107	0062	CHECK PAWL STUD
MPP030012	0063	PIN, SPIROL

854011	0064	COMPRESSION SPRING
N70149	0065	PAWL CHECK
N70145	0066	GUIDE,ARM
N90103	0067	SPRING,COMPRESSION
N100106	0068	CONTACT ARM
N100114	0069	CONTACT ARM GUARD
N100120	0070	WEAR BUSHING
UB5130	0073	PIN,SPIROL 1/4 X 1 7/8
MPW6.3	0074	WASHER,PWN M6
N80103	0075	BOTTOM,CANISTER
107455	0076	LATCH,CANISTER
N80108	0077	SPRING,FLAT
UB2110.4	0078	PIN, ROLL 1/8 X 5/8
N80106	0079	SPACER, LATCH
UB2126	0080	PIN, ROLL 1/8 X 1 5/8 LON
86459	0081	O-RING, .614X.070
MRG019824	0082	O-RING, .780X.094
TVA6	0084	KIT,TRIGGER VALVE
N100117A	0087	ASSEMBLY,DRIVER/PISTON
CNTK2	0095	KIT,CONTACT TRIP CONVERSION
100387	0097	SPRING,COMPRESSION
N100134A	0098	COVER,EXHAUST
N100136	0099	MUFFLER, EXHAUST
N100138	0100	SPACER, MUFFLER
MSC8125-28	0101	SCREW,SHCS M8X28
N100137	0102	RING, BUMPER
SEQ6	0107	KIT,SEQUENTIAL
N100126	0108	URETHANE WASHER
851756	0110	HANGER
MSC5080-16	0111	SCREW,SHCS,M5X0.80X16
103031	0112	GUARD,NAIL
MHE5080-100	0113	NUT,NYLON M5X.80
121632	0114	ASSEMBLY,BRACKET
121635	0115	ASSEMBLY,CANISTER