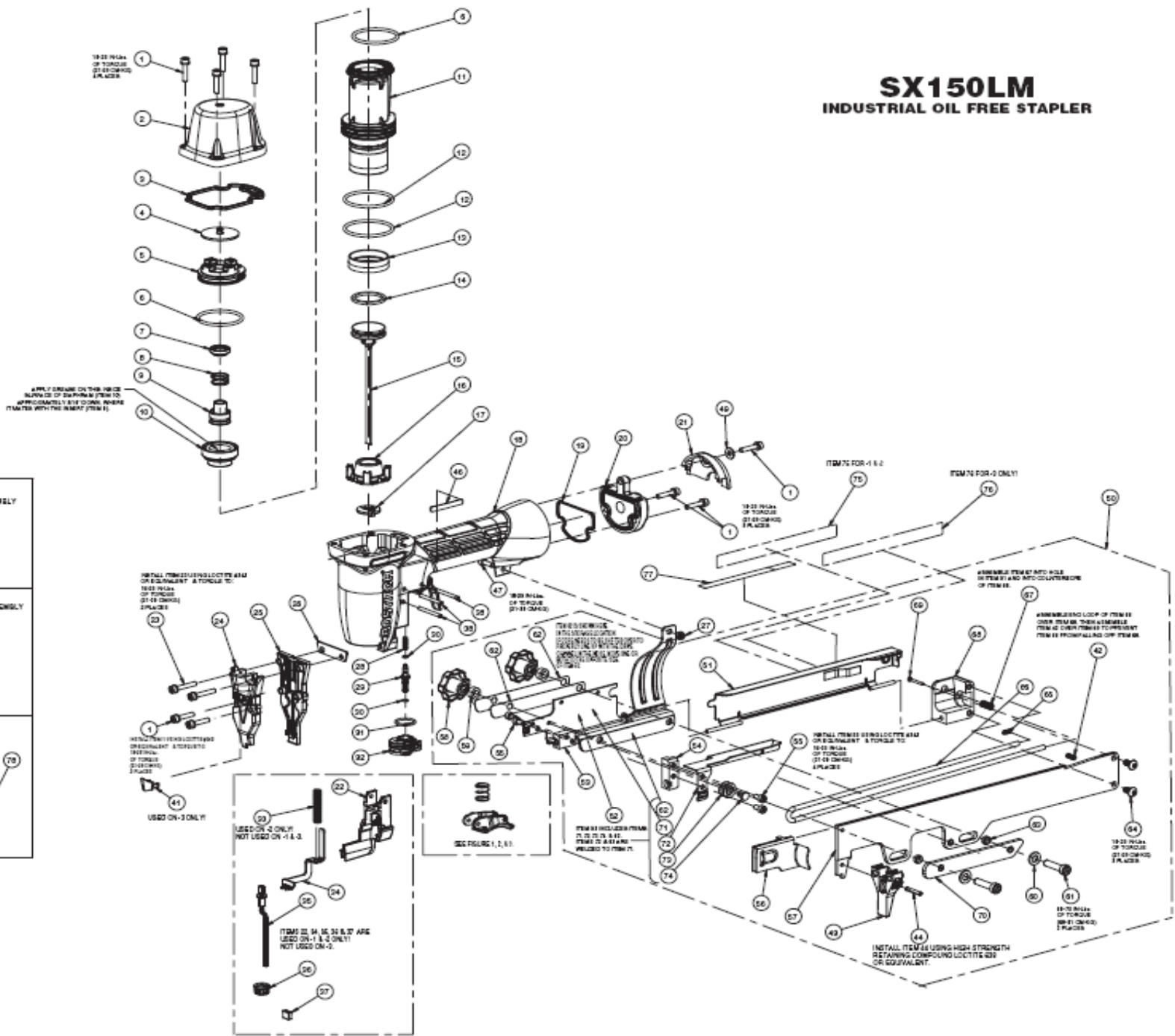


# SX150LM

## INDUSTRIAL OIL FREE STAPLER



**SYSTEM-1 CONTACT ACTUATED TRIGGER ASSEMBLY**

FIGURE 1

---

**SYSTEM-2 SEQUENTIAL ACTUATED TRIGGER ASSEMBLY**

FIGURE 2

---

**SYSTEM-3 TRIGGER ACTUATED ASSEMBLY**

FIGURE 3

ITEM 22, 24, 26, 32 & 37 ARE USED ON -1 & 2 ONLY NOT USED ON -3.

SEE FIGURE 1, 2, 3.

Item#	Illus.#	Description
121051	0001	SCREW,SHCS,M4X0.70X20
120996	0002	CAP,FRAME
113337	0003	SEAL,FRAME/CAP
160186	0004	SEAL, TOP
160187	0005	HOLD DOWN,HEADVALVE
101058	0006	O-RING,1.487X.103
120989	0007	SEAL,INSERT
120991	0008	SPRING,HEADVALVE
120032	0009	INSERT,HEADVALVE
120027	0010	DIAPHRAM,HEAD VALVE
120028	0011	SLEEVE,BT200
RG161210	0012	O-RING,1.612X.103 NBR
120061	0013	SEAL,CHECK
S32109	0014	RING,PISTON
121280	0015	ASSEMBLY,PISTON/DRIVER
124463	0016	BUMPER,DRIVE
121025	0017	GUIDE,DRIVER
149769	0018	FRAME,SX/SL LONG MAG
121035	0019	SEAL,FRAME END CAP
166057	0020	ASSEMBLY,END CAP
121032	0021	DEFLECTOR,CAP END
149786	0022	GUIDE,ARM
121052	0023	SCREW,SHCS,M4X0.70X25
120058	0024	COVER,TRIP
121283	0025	NOSE
121279	0026	PLATE,DRIVER
MHE4070-100	0027	ELASTIC STOP NUT,M4
N86115	0028	COMPRESSION SPRING
121029	0029	STEM,VALVE
MRG002514	0030	O-RING, .098X.055
850144	0031	O-RING, .614X.070
121005	0032	HOUSING,VALVE
121024	0033	SPRING,TRIP
120022	0034	TRIP,UPPER
120140	0035	ASSEMBLY,LOWER ARM
120024	0036	THUMBWHEEL
120056	0037	CONTACT FOOT,NO MAR
100298	0038	PIN,SPIRAL M3X30
CNTK1	0039	KIT,CONTACT TRIP CONVERSION
107582	0040	ASSEMBLY,S.T.TRIGGER
121013	0041	PLUG,COVER
107527	0042	SPRING,COMP-TRIP ADJ.
121008	0045	STOP,TRIGGER
142961	0046	LABEL,MAGNESIUM
MSC4070-12	0047	SCREW,SHCS,M4X0.70X12
100387	0048	SPRING,COMPRESSION
PW8	0049	WASHER,PWR,.188
149766	0050	ASSY,SX LONG MAGAZINE
158345	0051	ASSEMBLY, TOP GUIDE
158347	0052	ASSY,BRACKET,COVER & PULL
149775	0053	BLOCK,MTG-RIGHT,SL
149774	0054	BLOCK,MTG-LEFT,SX
MSC4070-8	0055	SCREW,SHCS,M4X0.70X8
149787	0056	PUSHER,SX LONG MAG
MHE6100-100	0058	NUT,ESN M6X1
149780	0059	SPACER,KNOB

MPW6-3	0060	WASHER,METRIC PLAIN
MSC6100-25	0061	SCREW,SHCS,M6X1.00X25
158356	0062	PLATE,SPACER
158355	0063	BUSHING,SLIDEWAY
MSB5080-10	0064	SCREW,SBHCS,M5X0.80X10
105053	0065	LINK,SPRING
149777	0066	SPRING,EXTENSION
103191	0067	SPRING,COMPRESSION
149771	0068	BLOCK,PIVOT
106063	0069	STUD
158354	0070	PLATE,CLAMPING
124032	0071	BRACKET,LM MTG
149768	0072	COVER,LM FIXED
149772	0073	PULLEY
104149	0074	STUD,SPRING PULLEY
158612	0075	LABEL,WARNING
158613	0076	LABEL,WARNING NO C.T.
121288	0077	LABEL,FASTENER SPECS
159884	0078	ASSEMBLY,SECOND TRIGGER
167192	0079	ASSY,CORE (LONG MAG)