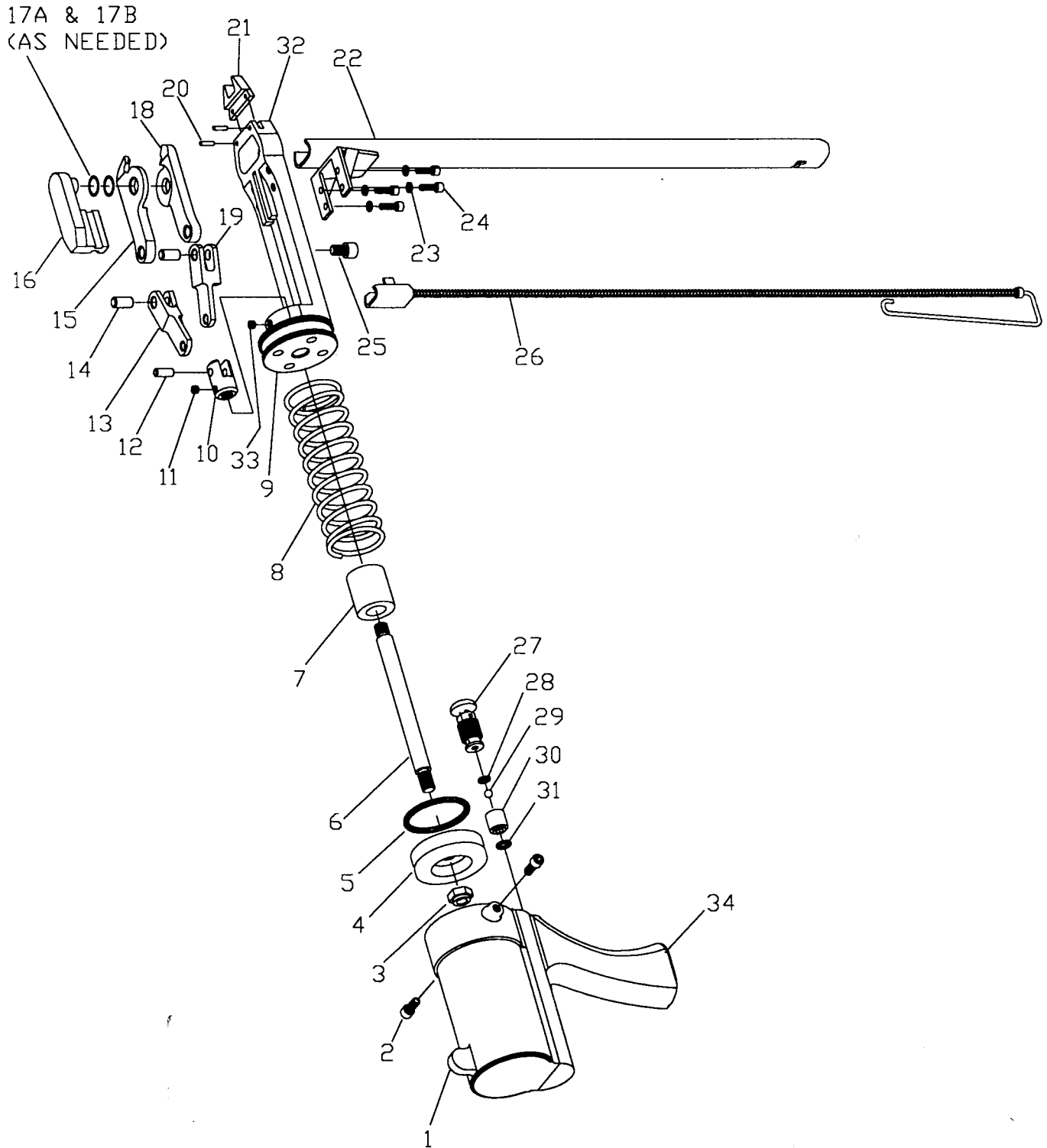


TR 201 TR 203 Bostitch / Spencax



TR201
TR203

ITEM	DESCRIPTION	PART NUMBER	QUANTITY	
1	GRIP, PISTOL HOUSING	501201	1	1
2	SCREW, SOCKET HEAD CAP	TL710210	2	2
3	NUT, PISTON ROD	TR105004	1	1
4	PISTON	TR105006	1	1
5	O-RING PISTON	TR105005	1	1
6	ROD, PISTON	TR105008	1	1
7	BUMPER, SPACER	TR105009	1	1
8	SPRING, PISTON RETURN	TR105007	1	1
9	SPACER, FRONT STOP	TR105012	1	1
10	CLEVIS, FINISHED	TR105013F	1	1
11	SCREW, CLEVIS LOCK	TR105015	1	1
12	PIN, CLEVIS	TR105014	1	1
13	LINK, ARM LEFT	TR105016F	1	1
14	PIN, JAW	TR105020	2	2
15	JAW, LEFT	TR105018F	1	1
16	SLIDE	TR105021F	1	1
17A	WASHER, WAVY (.008 THK.)	TR105028A	1	1
17B	WASHER, CUP (.010 THK.)	TR105028B	A/R	A/R
18	JAW, RIGHT	TR105019F	1	1
19	LINK, ARM RIGHT	TR105017F	1	1
20	PIN, ROLL FOR TEETH	TR105026	2	2
21	TEETH, REPLACEABLE	TR105025F	1	1
22	ASSEMBLY, MAGAZINE SHORT	TR417051F	1	0
	ASSEMBLY, MAGAZINE LONG	TR419051F	0	1
23	WASHER, #6 SPLIT LOCK	TL726000	4	4
24	SCREW, SOCKET HEAD CAP	TL716208	4	4
25	SCREW, SOCKET HEAD CAP	TL714206	1	1
26	ASSY, PUSHER SHORT	TR105A027F	1	0
	ASSY, PUSHER LONG	TR107A027F	0	1
27	ASSEMBLY, AIR VALVE	501410	1	1
28	VALVE BALL SEAL O-RING	TL620035	1	1
29	BALL, VALVE	501254	1	1
30	RETAINER, VALVE BALL	501213	1	1
31	"O" RING	SC08	1	1
32	CARRIAGE BODY	TR109024AF	1	1
33	SCREW, LOCK	TR105022	1	1
34	GRIP, MOLDED PISTOL	C04044	1	1

A/R* DENOTES AS REQUIRED FOR OPTIMUM PERFORMANCE.

RECOMMENDED SPARE PARTS LIST					
ITEM	DESCRIPTION	PART NUMBER	NO. OF TOOLS		
			1	5	10
1	GRIP, PISTOL HOUSING	501201	0	0	1
2	SCREW, SOCKET HEAD CAP	TL710210	0	0	2
3	NUT, PISTON ROD	TR105004	0	0	1
4	PISTON	TR105006	0	0	1
5	O-RING PISTON	TR105005	0	1	2
6	ROD, PISTON	TR105008	0	0	1
7	BUMPER, SPACER	TR105009	0	0	1
8	SPRING, PISTON RETURN	TR105007	0	1	2
11	SCREW, CLEVIS LOCK	TR105015	0	0	1
12	PIN, CLEVIS	TR105014	0	1	2
13	LINK, ARM LEFT	TR105016F	0	1	2
14	PIN, JAW	TR105020	0	2	4
15	JAW, LEFT	TR105018F	0	1	2
16	SLIDE	TR105021F	0	0	1
17A	WASHER, WAVY (.008 THK.)	TR105028A	1	2	4
17B	WASHER, CUP (.010 THK.)	TR105028B	1	2	4
18	JAW, RIGHT	TR105019F	0	1	2
19	LINK, ARM RIGHT	TR105017F	0	1	2
20	PIN, ROLL FOR TEETH	TR105026	0	0	1
21	TEETH, REPLACEABLE	TR105025F	0	1	2
24	SCREW, SOCKET HEAD CAP	TL716208	0	0	1
25	SCREW, SOCKET HEAD CAP	TL714206	0	0	1
26	ASSY, PUSHER SHORT	TR105A027F	0	1	1
	ASSY, PUSHER LONG	TR107A027F			
27	ASSEMBLY, AIR VALVE	501410	0	0	1
28	VALVE BALL SEAL O-RING	TL620035	0	1	2
29	BALL, VALVE	501254	0	1	2
30	RETAINER, VALVE BALL	501213	0	0	1
31	"O" RING	SC08	0	1	2

RECOMMENDED TOOL LIST

- DESCRIPTION
- 3/8" Combination Wrench
1/2" Combination Wrench
- Long Hex. Key Set
(Sizes: 5/64, 3/32, 1/8, 9/64, 5/32, 3/16)
- Spanner Wrench
Pin Punch Set
(Sizes: 3/32, 1/8, 3/16, 1/4)
- Hammer
8-1/2" Machinist Scribe

SPECIFICATIONS AND TYPES OF MATERIALS AVAILABLE BY PART NUMBER							
PART NUMBER	PER STRIP #	PER BOX #	MATERIAL	WIRE DIAMETER	RING I.D.	RING LEG OPENING	MAX. & MIN. I.D. RING SIZE
RINGSR15	50	10,000	BRIGHT BASIC	0.070	0.75	0.56	1/4 - 3/8
RINGSR15G	50	10,000	GALVANIZED	0.070	0.75	0.56	1/4 - 3/8
RINGSR15SS	50	10,000	STAINLESS STEEL	0.070	0.75	0.56	1/4 - 3/8
RING15NSOP	50	10,000	BRIGHT BASIC	0.070	0.75	0.56	1/4 - 3/8

* RINGS ARE ONLY AVAILABLE IN SHARP POINTS.