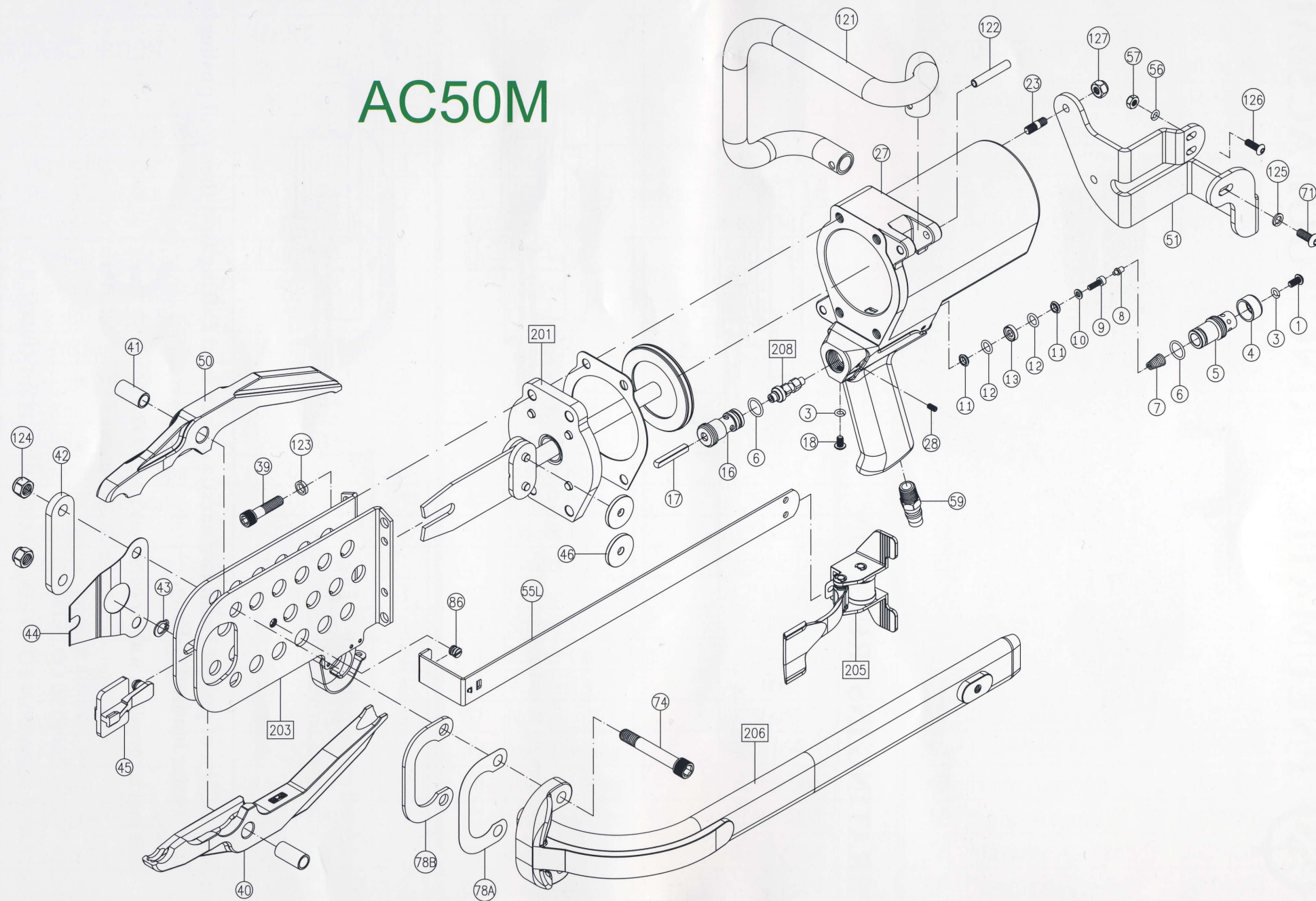
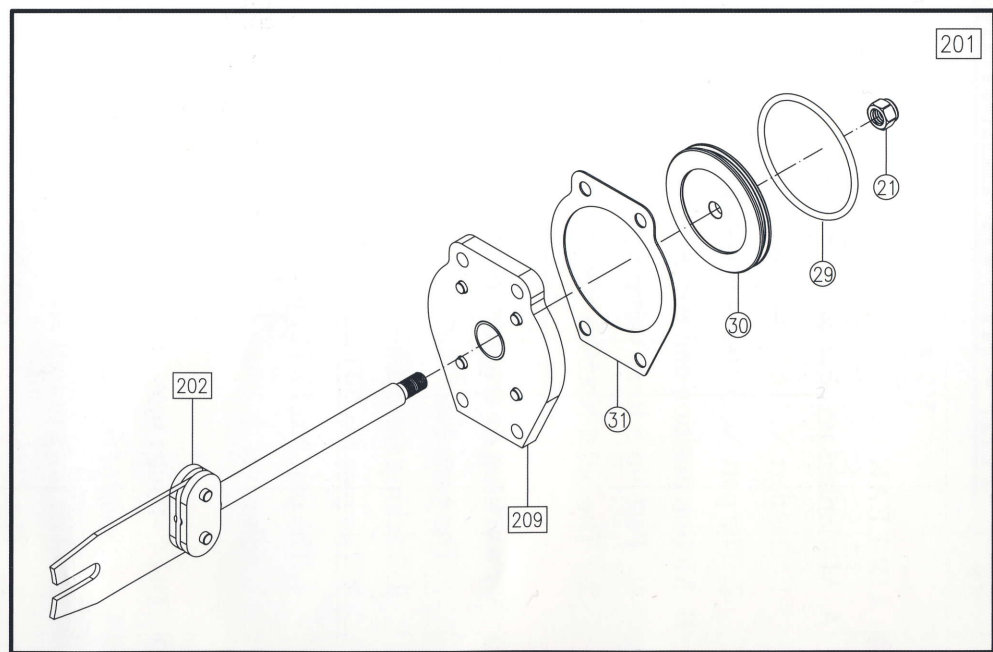
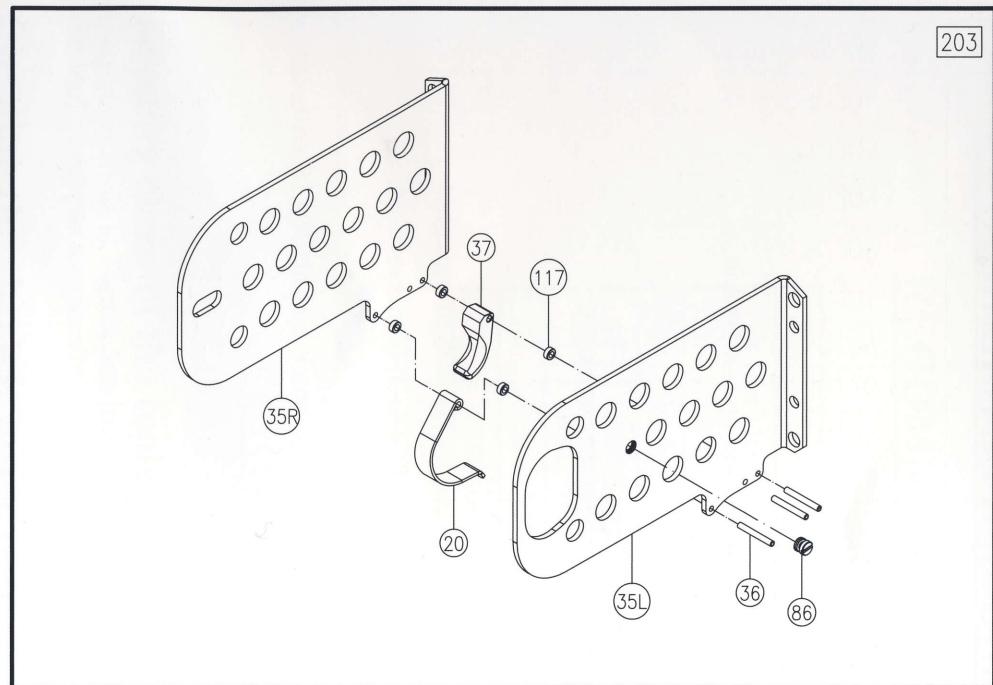
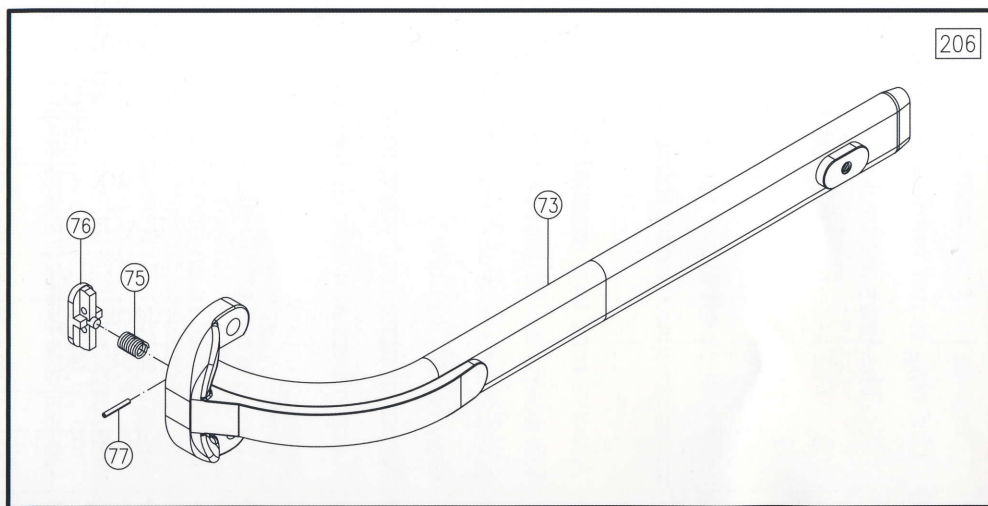
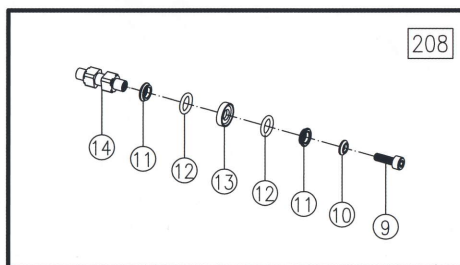
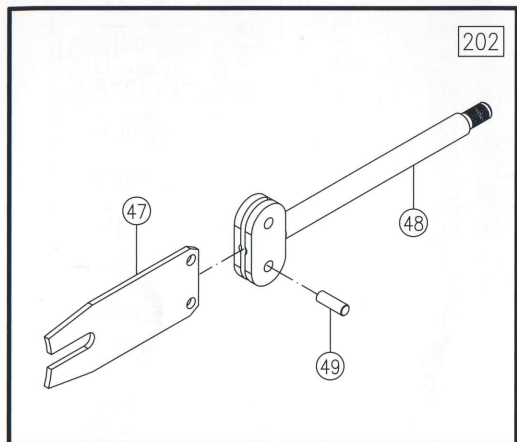
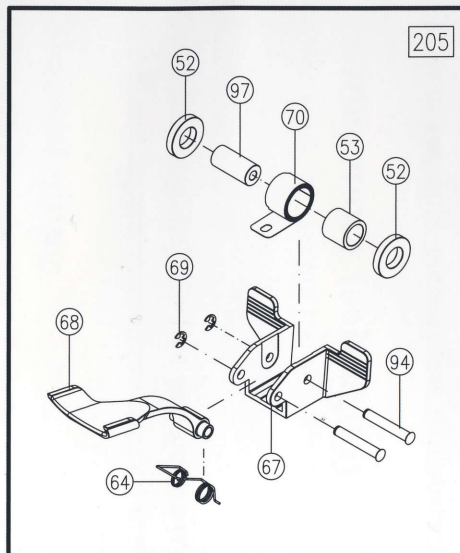
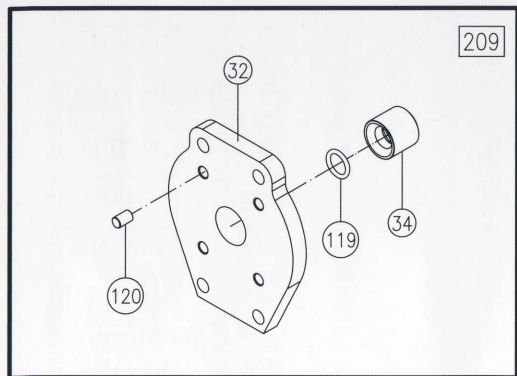


AC50M





PARTS LIST

ITEM	DESCRIPTION	PART NUMBER	Q'TY	ITEM	DESCRIPTION	PART NUMBER	Q'TY	ITEM	DESCRIPTION	PART NUMBER	Q'TY
1	Set Screw	AC01001	1	35L	Side Plate (Light)	AC5035L	1	71	Feeder Arm Screw	AC50071	1
3	Shakeproof lock Washer	AC01003	2	36	Roll Pin	AC50036	3	73	Magazine Body	AC50073	1
4	Air Deflector	AC01004	1	37	Trigger	AC01037S	1	74	Jaw Bolt	AC50074	2
5	Rear Valve Seat	AC01005	1	39	Socket Head Cap Screw	AC50039	4	75	Magazine Spring	AC50075	1
6	O-Ring	AC01006	2	40	Upper Jaw	AC50040	1	76	Magazine Shoe	AC50076	1
7	Throttle Spring	AC01007	1	41	Jaw Bushing	AC50041	2	77	Roll Pin	AC50077	1
8	Throttle Spring Locator	AC01008	1	42	Support Plate	AC50042	1	78A	Magazine Shim	AC5078A	1
9	Throttle Valve Screw	AC01009	2	43	Latch Pin Clip	AC50043	1	78B	Magazine Shim(Thick)	AC5078B	1
10	Valve Screw Washer	AC01010	2	44	Latch Spring	AC50044	1	86	Plate Screw	AC01M086	1
11	O-Ring Support	AC01011	4	45	Latch	AC50045	1	94	Pusher Pin	AC50M094	2
12	O-Ring	AC01012	4	46	Roller	AC50046	2	97	Spring Roll	AC50M097	1
13	O-Ring Center Support	AC01013	2	47	Feeder Blade	AC50047	1	119	O-Ring	AC50119	1
14	Throttle Valve Spacer	AC01014	1	48	Piston Rod	AC50048	1	120	Roller Pin	AC50120	4
16	Front Valve Seat	AC01016	1	49	Roller Pin	AC50049	2	121	Handle	AC50121	1
17	Throttle Stem	AC01017	1	50	Lower Jaw	AC50050	1	122	Handle Pin	AC50122	1
18	Button Head Cap Screw	AC01018	1	51	Feeder Arm	AC50051	1	123	Washer	AC50123	4
20	Trigger Guard	AC01020	1	52	Plastic Washer	AC50M052	2	124	Plate Nut	AC50124	2
21	Flexloc Nut	AC50021	1	53	Spring Roll	AC50M053	1	125	Washer	AC50125	1
23	Stud	AC01023	2	55L	Feeder Guide Rail	AC50M55L	1	126	Screw	AC50126	2
27	Housing	AC50027	1	56	Washer	AC50056	2	127	Nut	AC50127	1
28	Set Screw	AC01028	2	57	Nut	AC50057	2	201	Piston Assembly	AC50201	1
29	O-Ring	AC50029	1	59	Inlet Bushing	AC01059	1	202	Piston Rod Assy.	AC50202	1
30	Piston	AC50030	1	64	Pusher Spring	AC50M064	1	203	Frame Assembly	AC50203	1
31	Cylinder Gasket	AC50031	1	67	Magazine Set	AC50M067	1	205	Pusher Assembly	AC50205	1
32	Piston Stop Spacer	AC50032	1	68	Pusher	AC50M068	1	206	Magazine Assembly	AC50206	1
34	Cylinder	AC50034	1	69	Stop Ring	AC50M069	2	208	Throttle Assembly	AC01208	1
35R	Side Plate (Right)	AC5035R	1	70	Spring	AC50070	1	209	Piston Spacer Assy.	AC50209	1

RECOMMENDED SPARE PARTS LIST

ITEM	DESCRIPTION	PART NUMBER	Q'TY
29	O-Ring	AC50029	1
30	Piston	AC50030	1
40	Upper Jaw	AC50040	1
44	Latch Spring	AC50044	1
45	Latch	AC50045	1
47	Feeder Blade	AC50047	1
50	Lower Jaw	AC50050	1
64	Pusher Spring	AC50M064	1
70	Spring	AC50070	1

PERIODIC MAINTENANCE

1. Keeping clean of the tools

Do not set tools at the place where will get damage easily. Please keep from dust and humidification. Putting the tool in proper temperature is very important when the tool does not be used for a long time.

2. Cleaning the obstacle inside of tool

After using tools, please clean any obstacle blocking in JAWS (#40, #50). Keeping the tools clean is better.

3. Putting down tools lightly

After work, please put tools down lightly to avoid damaging the body and the magazine of tool.

4. Lubrication

To insure long, trouble-free service, we recommend air line lubricators and Filter Units for proper lubrication and clean, dry air. A good grade of oil that emulsifies in water is recommended for air tools.

5. Manual oiling

Although the jaws and other moving parts of the tool do need to be oiled, periodic oiling in small amounts may increase the serviceable life of the tool that receives heavy use. On a daily basis, place 4 -5 drops of light non-detergent oil into the inlet fitting where the supply line connects on the bottom of the handle.

LIMITED WARRANTY

ANN-CHAIN ENTERPRISE CO., LTD. warrants that the Pneumatic C-Ring tool is free from Defects in material and workmanship under normal use, within half year from the date of purchase, in the country of purchase. The warranty is extended to the original purchaser only. All parts except the consumable parts are warranted for half year from date of purchase and will be replaced if the sole judgment of ANN-CHAIN ENTERPRISE CO., LTD. they should be deemed defective over and above that considered to be normal wear.